



Swatara News

June 2013

Swatara Watershed: Parts of Berks, Dauphin, Lebanon & Schuylkill Counties

Swatara Water Trail:

- 60 miles in length
- Public Access Points every 7 miles
- Schuylkill, Lebanon & Dauphin Counties
- Sites: Union Canal locks, limestone outcrops, farms, fossil beds, log cabins, historic bridges....

Inside this issue:

Devil Ducks Captured	2
Enjoy the Great Outdoors	2
Swatara Bridges	2
Swatara State Park Improvements	3
Eagles Nest on the Swatara	3
Inwood Bridge	3
Kittatinny Ridge	4

25th Annual Swatara Sojourn

Pulling trash from the Swatara is a never-ending task. During the 25th annual Swatara Sojourn, 62 tires were pulled from the Swatara along with tons of balls, bottles, buckets, and that's just the "Bs". Starting in Pine Grove, Schuylkill County, a flotilla of over 100 people floated the Swatara Creek May 4 & 5. Passing Union Canal Locks and lunching at the Bordner Cabin in Swatara State Park, Lebanon County, paddlers listened to Conrad Weiser, aka Bob Morris, tell of paddling to the area with German farmers, who settled in the Valley in the 1700s. Camping at the Lickdale Campground overnight provided a great opportunity to hold a Cinco de Mayo party, compete with a piñata for the children to

break and a homemade salsa contest. Sunday morning, after a breakfast provided by June Blouch at



Kool Zone, paddlers got underway, lunching at the Waterworks where Railroad Engineer Jack Stouffer recounted the Milk and Honey (M&H) and Lebanon to Tremont (L&T) Railroads. Ending the float at Swatara Watershed Park, 1929 Black's Bridge Road, Annville, a caravan of cars meandered west a few miles to see a nest of Bald Eagles—a perfect ending to a perfect sojourn. Some additional sponsors like

The Hershey Company, American Water Company, Greater Lebanon Refuse Authority, Mease Motors, PA Association of Watersheds and Rivers, PA Fish and Boat Commission, Swatara State Park, and Swiss Premium Dairies kept the float affordable for families. Supporting municipalities include the County of Lebanon, Jonestown Boro, North Lebanon, North Londonderry, and Swatara Townships.

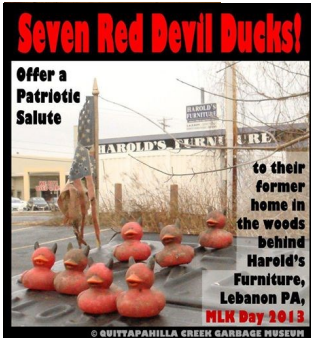


Quittapahilla Creek Clean-ups

For the third time, Quittie Creek Hero Barry led a team of volunteers to clean the Quittie behind Ladd Motors near the 2600 block of Cumberland and Chestnut Streets. Later, Mike Schroeder led an effort to beautify the Quittapahilla behind Harold's Furniture. Swatara Watershed members expanded the cleanup to behind Wen-

dy's. Businesses along this stretch of the Quittapahilla are recipients of trash from the Hazel Dyke channel during storm events, which cause debris jams. Finally, there was a TS Lee Anniversary cleanup to help neighbors prevent clogging of a bridge, thus protecting remaining homes not purchased by FEMA near S King Street, in Annville.





In a Drains to Streams experiment, these devil ducks only made it as far as the Quit-taphailla Creek.

Devil Ducks Captured

Ducks are cute, aren't they? But if we have too many ducks, they can create problems, and turn into ---- Devil Ducks.

Pollutants can wash off of our lawns, farms, and parking lots. Much like a dye tracer, these little Devil Ducks can represent that pollution—too many chemicals on your lawn, cigarette butts, bottles, cans, oil, antifreeze, or other pollutants that travel through an underground pipe, and end up in a nearby stream.

If you hike along the Quit-taphailla or below it's confluence with Swatara, watch for

our marked red Devil Ducks. If you find one, please collect it, snap a picture, and email to Litz@mbcomp.com, or post it to the Swatara Water Trail Facebook page <https://www.facebook.com/#!/pages/Swa...> . We'd like to track they're voyage.

Swatara Watershed Park offers Seasonal Primitive Camping and U-Tow canoes for groups.

Enjoy the Great Outdoors

For Sale: Rugged, durable 1989 Michi-Craft 17' commercial grade aluminum canoes, 720 pound capacity, wide beam for stability. Made from hardened air craft aluminum. \$300 each. Call Park Ranger Tom Embich 649.9361.

Get outdoors with your family. **Seasonal Primitive Campsites** available for a \$425 donation. Fish, swim, hike the Swatara Watershed Park, 1929 Black's Bridge Road, Annville. For available sites, call Park Ranger Tom Embich 649.9361.

8 U-Tow canoes on a trailer available for groups. Call Park Ranger Tom Embich 649.9361 for terms.

Swatara Bridges

According to HRG, Duke Street Bridge (left), Dauphin County, will be replaced over the Swatara Creek.

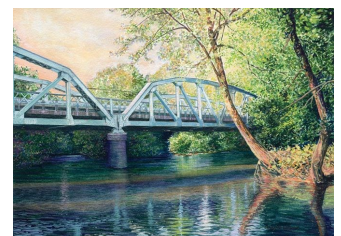
Craig Andrews released his painting (right) of the Lickdale iron bridge over Swatara Creek

Levan's Bridge is located to the east of Jonestown over the Little Swatara Creek. The approaches and wing walls were damaged in Tropical Storm Lee and the approval

of FEMA funds allowed us to get those repairs (about \$15,000) completed. It's not a high traffic bridge, but the closure necessitated a 4 mile detour for local residents and farmers.



Duke Street Bridge over Swatara Creek.



3500 Acre Swatara State Park Improvements

For a leisurely **drive through Swatara State Park**, Old State Road can now be accessed from Swopes Valley Road the **2nd Friday and Saturday** of each calendar month and the **4th Friday and Saturday during March, April, September, and October**. Visitors exit the Park via Monroe Valley.

Please note that by vehicle, only official Swatara Watershed Association Bordner Cabin stewards can stop with cars to maintain the structure.

Old State Road was renamed Bear Hole Trail. Kinsley Con-

struction installed more culverts to avoid wash-outs.

Along with other bridges, a 485' walking bridge now spans the Swatara just south of Twin Grove Park at Sand Siding, Route 443.

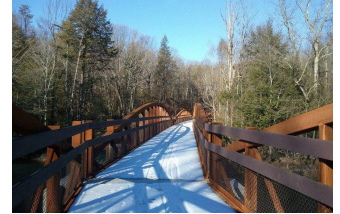
Parking areas like Trout Run off of Route 72 and the Lickdale Trail Head provide parking for visitors who want to hike, bike, and horseback ride.

A composting toilet was put out to bid for the Trout Run Trailhead.

New electronic maps showing Park improvements are avail-

able online. There is a free app called Pocket Ranger that displays all PA Trails.

The new Memorial Lake / Swatara State Park manager is Corey Snyder. He grew up in the Grantville area.



Foot bridge over the Swatara Creek in Swatara State Park.

Swatara Eagles Nest Along the Swatara

From the beginning of April for about 10 weeks, a family of eagles nested high up in a tree on a farm along the Swatara Creek. The location was perfect for Mom and Dad to hunt for fish, squirrel, rabbit, and other small game to feed to their two eaglets who went from fuzzy and cute to full sized, but with a dark head, which they'll keep for about a year. Dozens of onlookers used binoculars, telescopes, and zoom cameras to capture stills and video of the eagles.

Search for Swatara eagles on YouTube. Fans suggested names for the new arrivals--Quittie & Swattie, Hope & Faith, Freedom and Valor, Starsky and Hutch, and Swattie and Tara.

Eagle fans suggested names for two new arrivals--Quittie & Swattie, Hope & Faith, Freedom and Valor, Starsky and Hutch, and Swattie and Tara.

Inwood Bridge

Since the Inwood bridge is eligible to be placed on the National Register of Historic Places, the Federal Highway Administration will cover 80% of the project's cost, and PennDOT will pay for 15% for bridge restoration. Wilson Consulting received the commissioner's permission to ask for a \$95,445 supplemental agreement with PennDOT to proceed with design for restoration of the bridge so it can be put out for bid.

The county's share of the supplement will be \$4,772.

Replica abutments will elevate the bridge over the Swatara to eliminate potential flooding, and create a more direct approach to Route 72, eliminating a dip between the road and bridge. The Rail Trail, which runs parallel to the creek, will be ramped up in both directions to allow safe crossing on the approach road.

Recommended Reading: "**The Big Thirst**" by Charles Fishman. Quote #1: "Water itself isn't becoming more scarce, it's simply disappearing from places where people have become accustomed to finding it—where they have built communities assuming a certain availability of water—and reappearing somewhere else."



Inwood Bridge is closed to traffic, but will be restored.

**Berks, Dauphin, Lebanon
& Schuylkill Counties**

2302 Guilford St., Lebanon PA 17046

Phone: 717.644.4698

E-mail: Litz@mbcomp.com

Web: www.SwataraWatershed.com

Return Service Requested
Non-profit Organization
US Postage Paid
Permit #100
Lebanon PA

**You can invest in our Clean Water Projects:
Individual Membership \$20/year, \$200
lifetime. Business Membership \$500
lifetime.**



We're on the web
www.SwataraWatershed.com and
Facebook-Swatara Water Trail.

Kittatinny Ridge hosts the Appalachian Trail

Co-led by Audubon PA and the Appalachian Trail Conservancy, an alliance of organizations, agencies and academic institutions working together to conserve the natural, scenic, cultural, and aesthetic resources of the Kittatinny Ridge and Corridor have completed an inventory and maps of the Ridge.

The Coalition's vision is to preserve the integrity of the Kittatinny Ridge and Corridor, a rugged, forested mountain surrounded by a mosaic of working lands, healthy streams and pastoral

beauty. The name, Kittatinny, comes from a Lenape Native American word meaning "endless hill" or "great mountain." The Kittatinny Ridge is home to the Appalachian and Tuscarora Trails, tens of thousands of acres of State Game Lands, State Forest, State Parks, and municipal parks.



Kittatinny Ridge and the Appalachian Trail